



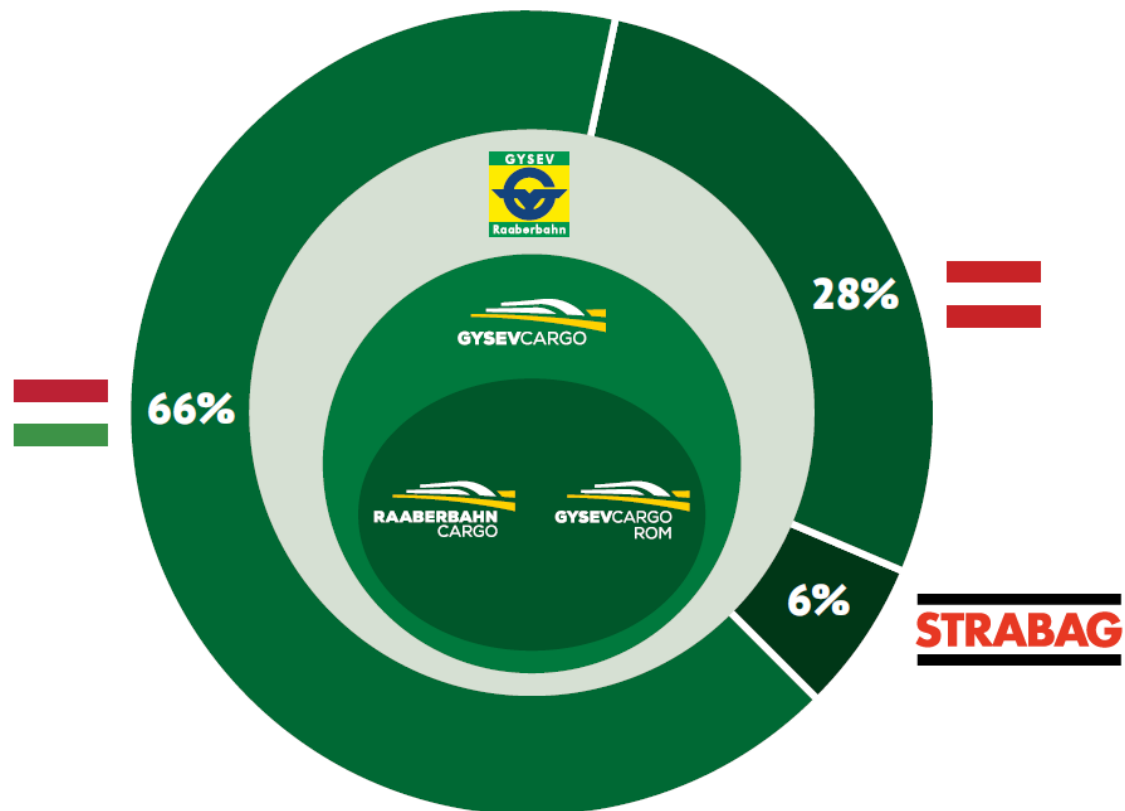
GYSEVCARGO

Dr. Zoltán Zentai, Csaba Jabronka

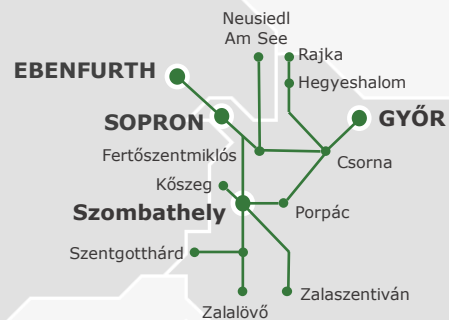
RAG-TAG meeting of RFC AMBER and RFC Baltic-Adriatic

23. 05. 2024

Ownership structure

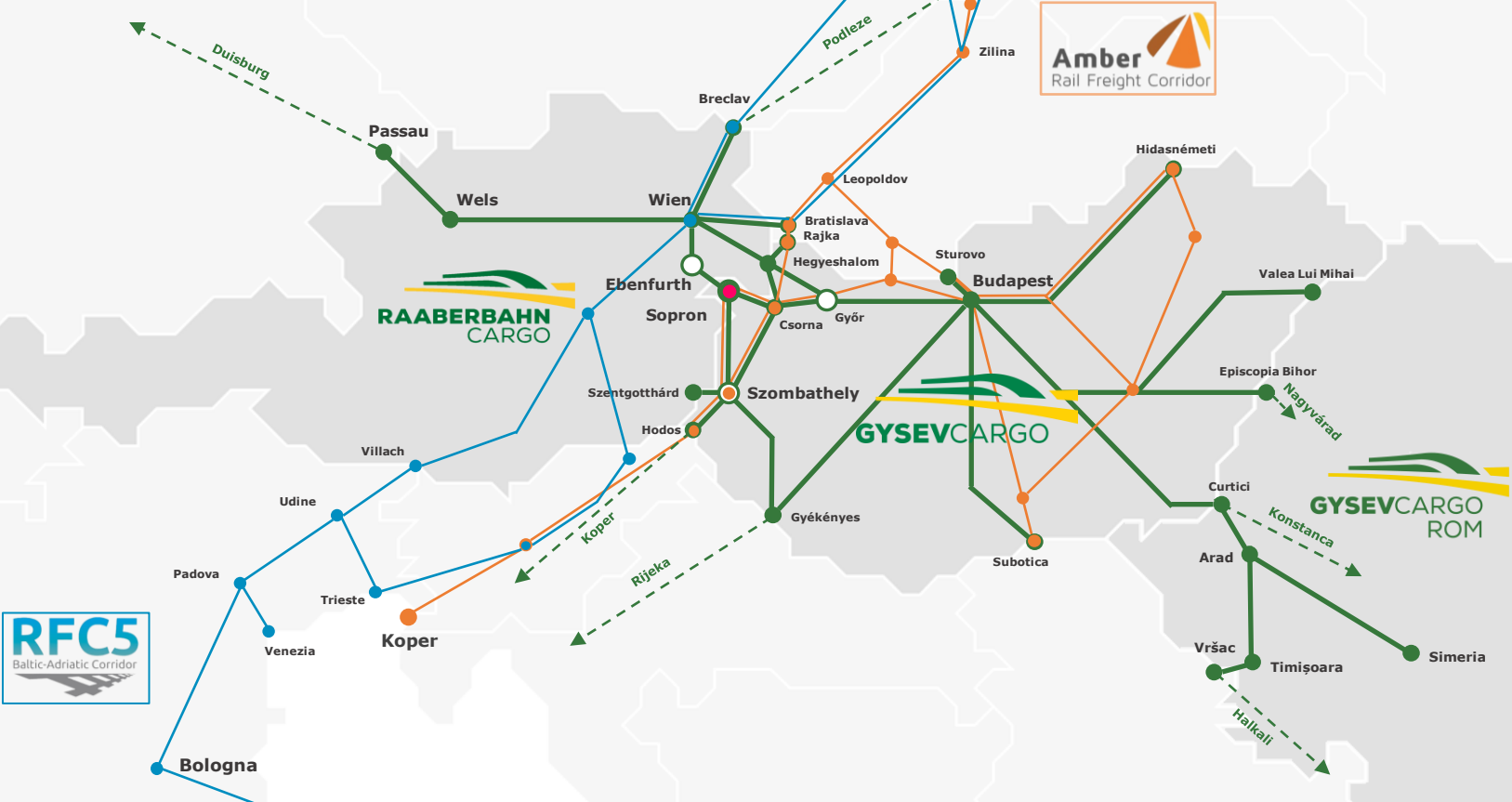


GYSEV rail infrastructure



Operations network and connections to RFC-s

- Headquarter of GYSEV CARGO
- Rail node
- Network connecting point

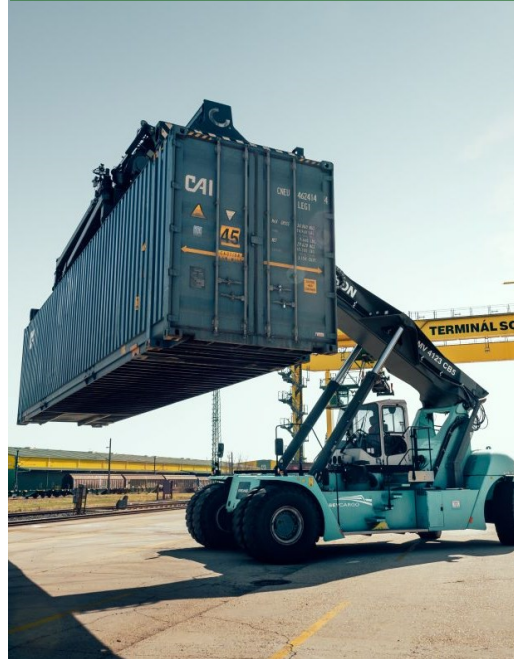


Complex logistics services



Rail services

Container terminal



Warehouses



Traction and freight transport

- Transport of intermodal and conventional block trains
- Wagon collecting/building block trains
- Single wagon transport (on own infrastructure)
- Tracking & tracing
- Comprehensive commercial services (consignment note, re-expedition etc.)
- Transport of dangerous goods/RID
- End-to-end digitalisation
- Marshalling yard



GYSEV TAURUS
electric locomotives
5 pcs



Leased ELL Vectron
7 pcs



GYSEV Vectron
9 pcs



GYSEV CARGO +
RBC Vectron
2 pcs

Interoperable E-Lokomotive



GYSEV V43
electric locomotives
14 pcs



GYSEV BR233
diesel locomotives
3 pcs



GYSEV shunting
locomotives
17 pcs



Own wagons
207 pcs

Type: Hbbiilns, Eaos, Eos, Eas,
Eanos, Sgns, Sgmrss



Leased wagons
104 pcs

Type: Eas, Fas

Facilities of the container terminal

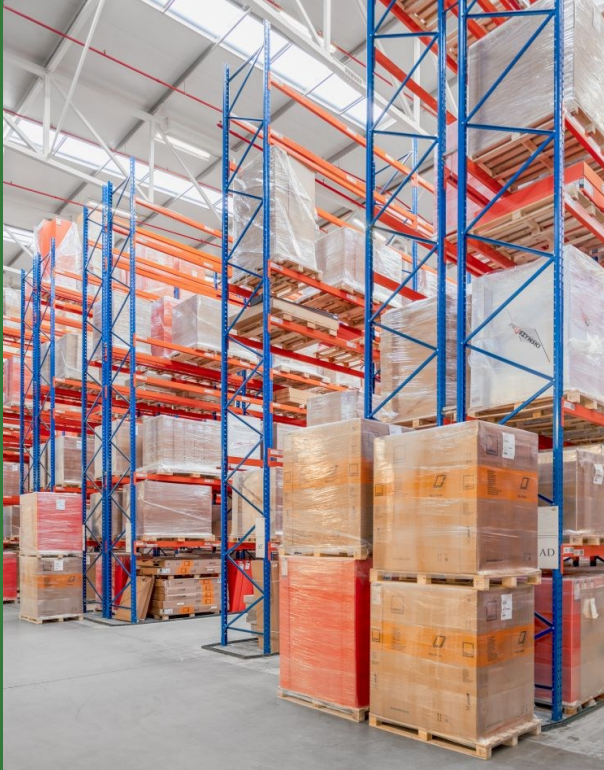
- Number of tracks with crane services: 6
- Number of storage tracks: 4
- 2 gantry cranes (40 t – 45' container, swap bodies, semi-trailers)
- 1 mobile crane (40 t – 45' container, swap bodies, semi-trailers)
- Storage capacity: 30.000 m²
- Maximum container handling capacity: 82.000 units/year
- Storage: 2.000 TEUs at a time
- Asset protection and security service





Terminal services

- Transfer service, storage, empty container depot of multi/intermodal transport units
- Loading/unloading, re-expedition
- Repairing and cleaning of multi/intermodal transport units
- Block train composition
- Organization of pre- and on-carriage with defrayal
- Handling and storage of dangerous goods (RID/ADR)
- Comprehensive customs clearance



Warehouse logistics

- Customized warehouse logistics services
- High-bay rack and block storage options
- Transshipment activities road ↔ rail relations
- Finishing services, unit load building
- Public, consignment, contract and VAT warehouse services
- Handling of a variety of corporate management systems
- Inventory records by storage location

Open loading area - **60.000 m²**

Indoor warehouse capacity in Sopron - **35.000 m²**

Indoor warehouse capacity in Mosonmagyaróvár - **18.000 m²**

Organisation of road transport

- Organisation of road transport connected to rail freight transport (pre- and post-carriage)
- Excellent partner network of road transporters
- Organization of domestic and international transport – LTL-FTL
- Curtain sided, box, mega, refrigerated trucks (from 3,5 to 40 tons)
- Container transport vehicles (from 20 to 45' containers)
- Domestic and international collecting deliveries within 24-72 hours
- Complete customs clearance
- Transport of dangerous goods /ADR



Debrecen MACS container terminal

MÁV office building

GYSEV CARGO office building



Truck parking spaces

RVI. loading track
(usable length = 855 m)
RVII. loading track
(usable length = 855 m)



„Ready-to-drive car“ loading tracks (2 pcs)



Emerging industries in the region

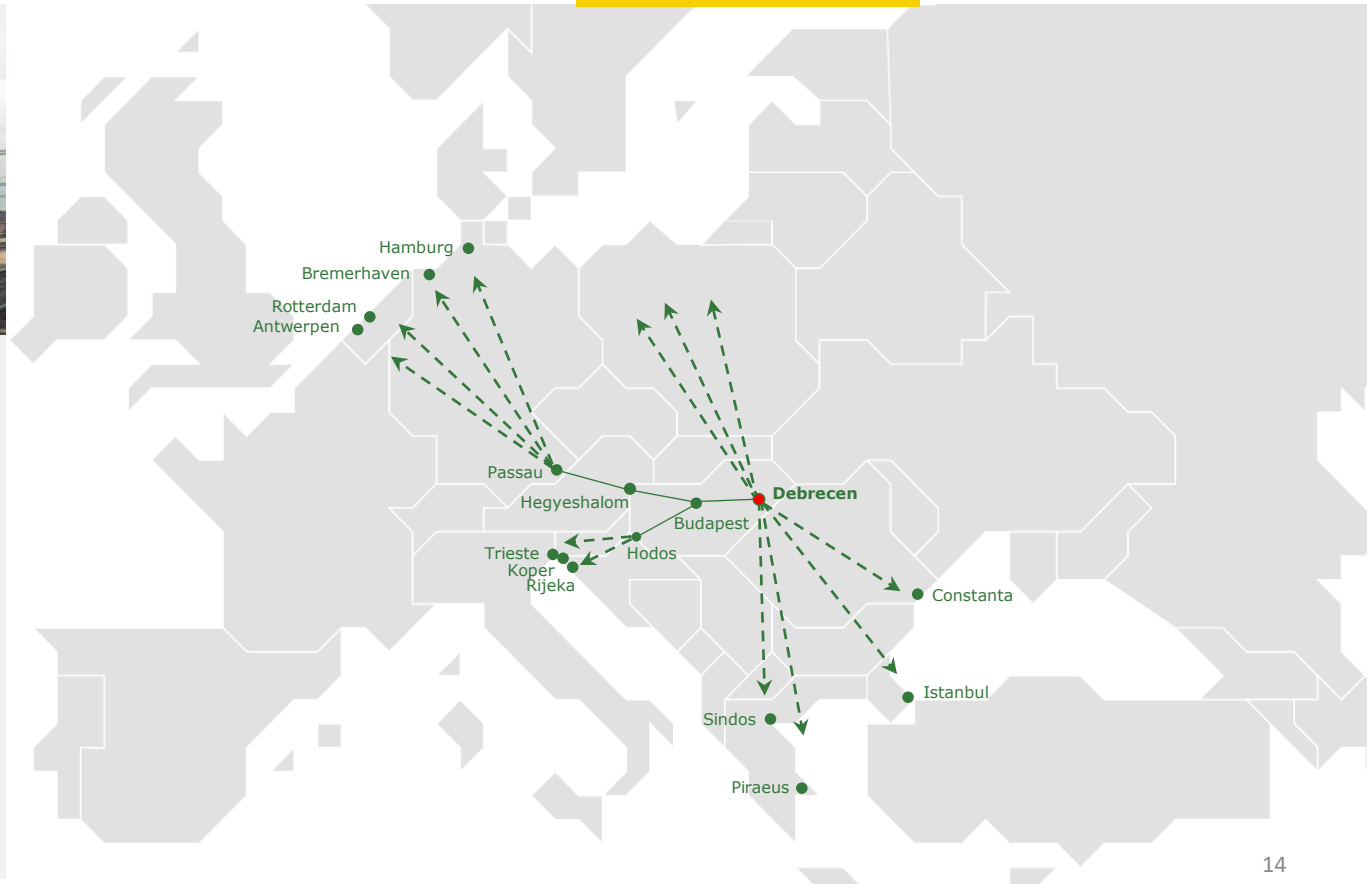
- **E-mobility, machine and aviation industry** (BMW, FAG/Schaeffler Group, CATL, HALMS, Semcorp, MANZ, Bumet, Thyssenkrupp, Krones, EcoPro, Skyways, EVE Power)
- **Electronics & IT** (Vitesco Technologies, NI, EPAM, Sensirion)
- **Business services - BSC** (Deutsche Telekom IT Solutions, BT, Flowserve, NI, Transcosmos, Diehl Aviation, Capgemini, 4iG)
- **Health and pharma** (TEVA, Richter Gedeon)

We are already in contact with most of these companies.

Environmentally responsible strategy



Potential destinations



- The construction of the terminal fits into the environmental strategy
- A good alternative to be carbon neutral

Terminal timeline



2024. Q3

Arrival of the first intermodal train

- starting basic terminal operations with a mobile stacker (reachstacker)
- comprehensive customs clearance (export, import)
- empty container depot



2025.

Completion of ongoing improvements in Q2

- construction of an additional 2 cranable tracks in the terminal area
- finishing the construction of the operator building



2026.

Start loading BMW ready-to-drive car

- development of intermodal processing capacity
- appearance of cranable and non-cranable semi-trailers

e-CIM CN /ECN



e-Airwaybill



e-Bill of Lading



Carriers

e-CMR



**DIGITALISATION IN THE RAIL CARGO SECTOR
IS NOT ANY MORE AN OPTION - BUT A STRATEGIC SUCCESS FACTOR**

Wide range of digital an IT solutions for the logistic sector

Asset management

Data handling and analyzing

Capacity planning an monitoring

Warehouse management

Transport management System

Terminal management



Preparation
Contracts
Orders



Planning
Orders
Trains
Locomotives
Shift, Staff
Decision support



Execution
Shunting
Trainlist
Interfaces IM
Interfaces partners
Real time info
Wagon defects

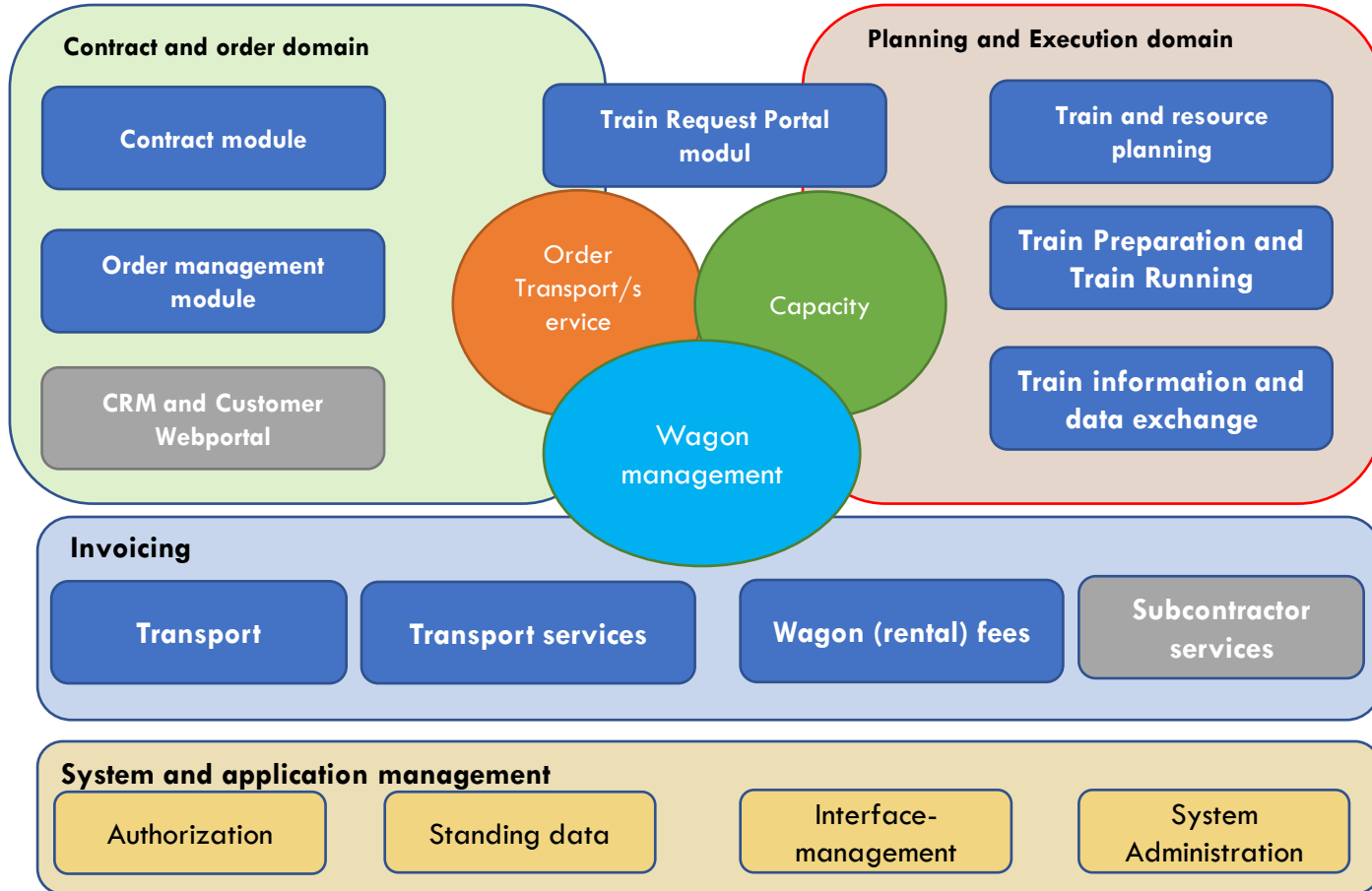


Invoicing
Transport
Services
Wagon



**Analytics
Reporting**

in one integrated IT system with digitalised workflows



Digitalisation and Interoperability/Corridor efficiency



Digital interoperability between RU-s and IM-s

Digitalised data flow and platforms

- H30 interface – train data
- ECN interface – consignment data
- Digital joined platforms for aviso and for border checks between RU
- RNE tools



Advantages in corridor management

Digital dataflow supports...

- More efficient planning of train running on the corridors
- Coordination of takeover/handover procedures at the borders
- Increasing the throughput capacity via quicker processes



Every company has to keep up with these trends.



GYSEVCARGO

Thank you for your attention!



WWW.GYSEVCARGO.HU